

Remote Operator for Vision & Samba Controllers

User Guide 11/15

Table of Contents

Overview	1
Supported Controllers.....	1
First-time Use	2
Adding PLCs.....	2
Adding Groups	3
Using Remote Operator	4
PLC Information	5
Application Settings	6

Overview

If you use Unitronics' Vision & Samba controllers, Remote Operator enables you to remotely access your controllers via smartphone and tablet. Use it to:

- Remotely access Vision and Samba controllers via Internet or wireless LAN connection
- Control and monitor automation and machines processes remotely
- View operational conditions, Alarms, data, and Trends in real time
- Configure communication channels for multiple controllers

Supported features include:


- Organize controllers in Favorites and Groups
- Shareable Configurations – send your list of controllers and settings via email for backup, or to share on another device
- Security via Password – create a password the first time you use the app to prevent unauthorized entry
- Pinch to zoom
- Display size changes according to the controller screen resolution

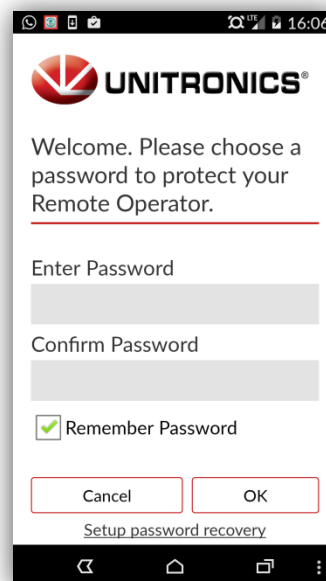
Supported Controllers

Mobile device minimum OS version: Android 4.0+, API 14+ iOS 7+


Supported Controllers: V350, V430, V700, V570, V1040, V1210, SM35, SM43, SM70

First-time Use

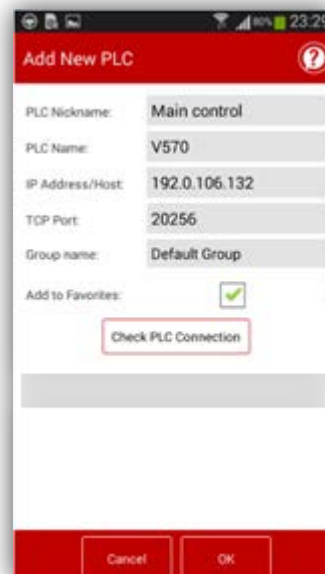
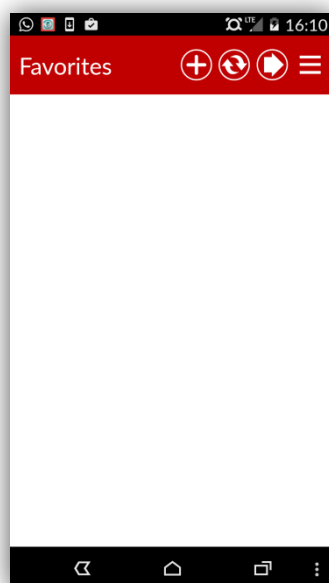
1. To open Remote Operator, tap on the app icon. 
2. Create a Password; this prevents unauthorized entry to the app.
You can also set a password recovery question (recommended).
3. Tap OK, the app opens an empty Favorites screen.



Adding PLCs

Tap  to add PLCs, configuring controllers and communication channels.

- PLC Nickname
Optional, but must be unique.
- PLC Name
Must exactly match the actual PLC Name, including capital letters.
- IP Address/Host & TCP and Port
These define the communication channel



** The IP Address & Port must be a unique combination.

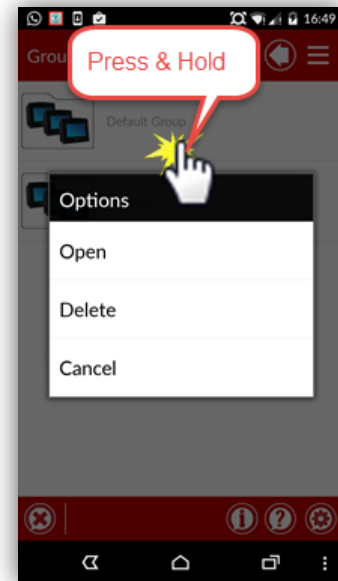
** Address Format: Incorrect 10.000.000.037 Correct 10.0.0.37.

- Group Name
Tap to open the Group list. Add to Favorites
When this is checked, the PLC is added to the Favorites list as well as a Group
- After you are finished, if desired, tap Check PLC Connection.





- Tap OK to save the PLC and return to Favorites.

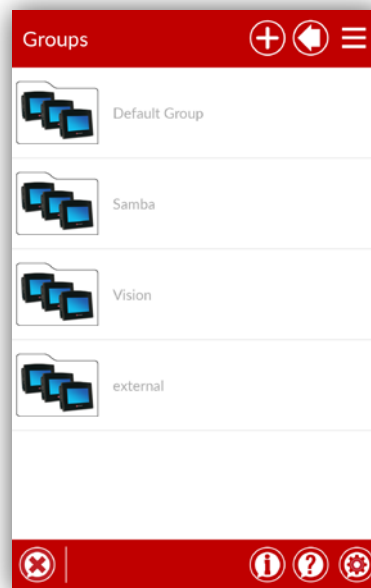
To delete a PLC:

- Android
Press and hold it to reveal the available options.
- IOS
Swipe left to reveal the options.



Adding Groups

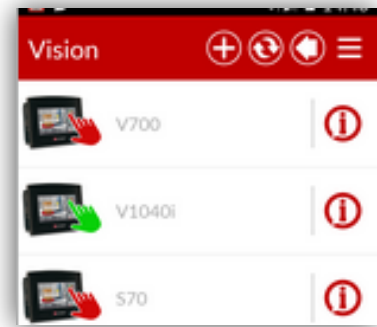
1. In the Favorites screen, tap  to open Groups.
2. Tap  to add a group.
3. Enter the Group Name, and a Comment if desired.
4. Tap OK to add the Group to the list.
5. Tap  to return to Favorites.
6. Tap  to Hide/Show the application bar at the bottom of the screen.







Using Remote Operator

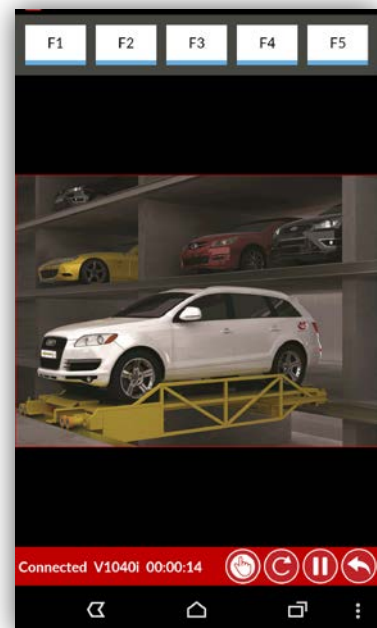
The PLCs you add are in Favorites and Groups.

A PLC marked with a green hand is active. You can access it remotely by tapping it.



During the session, use the Application bar icons to:

-  Switch between View Only or Full Control mode to disable or enable buttons and touch properties on the PLC screen displayed on your mobile device
-  Set the Refresh rate (seconds)
-  Pause the Remote session
-  Exit the Remote session



PLC Information

To view /edit PLC details, tap .

PLC Communication

- Tap fields to edit communication details.
- Use View Mode to select View Only or Full Control mode.
- Check the PLC Connection.



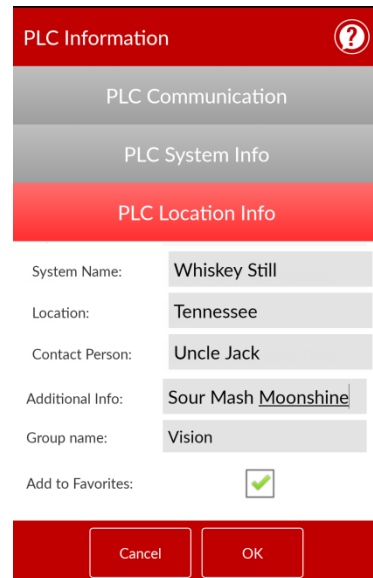
PLC System Info

- When connected: tap Get PLC Information to view PLC OS data.
- When not connected: shows details from last session.



PLC Location Info

- Tap fields to enter data regarding location, relevant contact details, add comments, and edit the PLC's group.
- Delete the PLC from Favorites by unchecking Add to Favorites



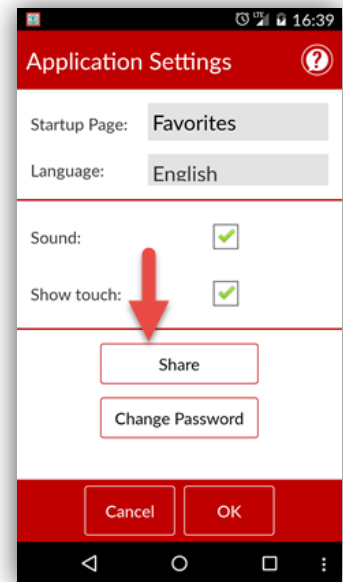
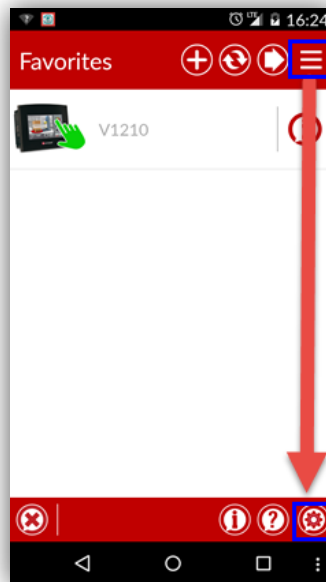
Application Settings

If the Application Bar is hidden, tap the 3 bars in the upper right to reveal it, then select the Setting icon.

Startup Page: Remote Operator will automatically load and check communications for all the PLCs located on the selected page

Sharing Settings

1. Tap Share, and follow the on-screen instructions to send the file, Share.unitronics.



2. When the Share.unitronics is received on the second device, tap to open it. Remote Operator will open with the Settings in the Share file.
Note that Remote Operator must be installed on the receiving device.